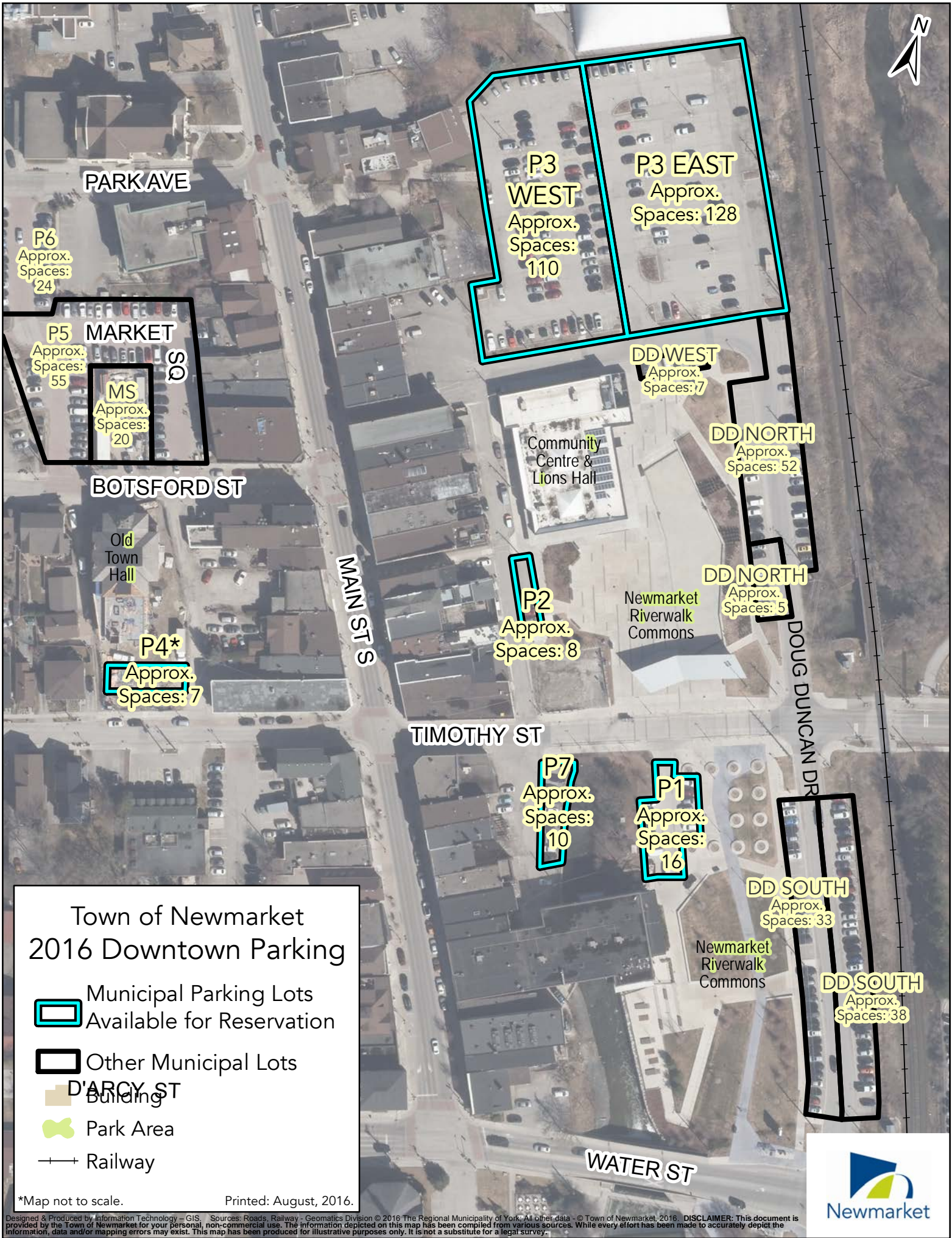


### A. Municipal Parking Lots

Municipal parking, if space is available, can be reserved in the following lots:	Location (location maps available upon request)	Approximate Capacity (standard parking stalls)
Downtown – P1	Timothy Street (between Cedar Street and Doug Duncan Drive.)	16
Downtown – P2	Cedar Street	8
Downtown – P3	Doug Duncan Drive (North end)	238 ±
Downtown – P4**	Timothy Street (Old Town Hall Entrances)	7
Downtown – P7	Timothy Street (between Cedar Street and Doug Duncan Drive)	10
Magna Centre	800 Mulock Drive	460 ±
Ray Twinney Community Centre	100 Eagle Street West	920 ±
Hollingsworth Community Centre	35 Patterson Avenue	88
George Richardson Park (GRP LOT 1)	195 Bayview Parkway	82
George Richardson Park (GRP LOT 2)	215 Bayview Parkway	35
George Richardson Park (GRP LOT 3)	225 Bayview Parkway	55
George Richardson Park (GRP LOT 4)	500 Bayview Parkway	95

Conditions for reserved parking:

- Film company to provide all necessary pylons, tape, and supervision during period of reservation
- Lots are reserved on a daily basis only
- Parking fees may apply



## Town of Newmarket 2016 Downtown Parking

-  Municipal Parking Lots Available for Reservation
-  Other Municipal Lots
-  D'ARCY ST Building
-  Park Area
-  Railway

\*Map not to scale.

Printed: August, 2016.





MULOCK DR

Approx.  
Spaces:  
55

Approx.  
Spaces:  
234

Approx.  
Spaces: 88

Approx.  
Spaces: 83

MULOCK RD

FERNBANK RD

MULOCK RD

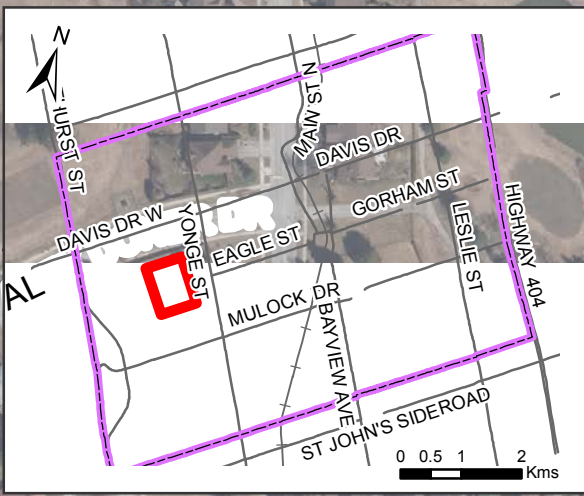
NELLIE LITTLE CRES

Town of Newmarket  
Magna Centre  
800 Mulock Drive

 Municipal Parking Lots  
Available for Reservation  
(Approx. total spaces: 460)

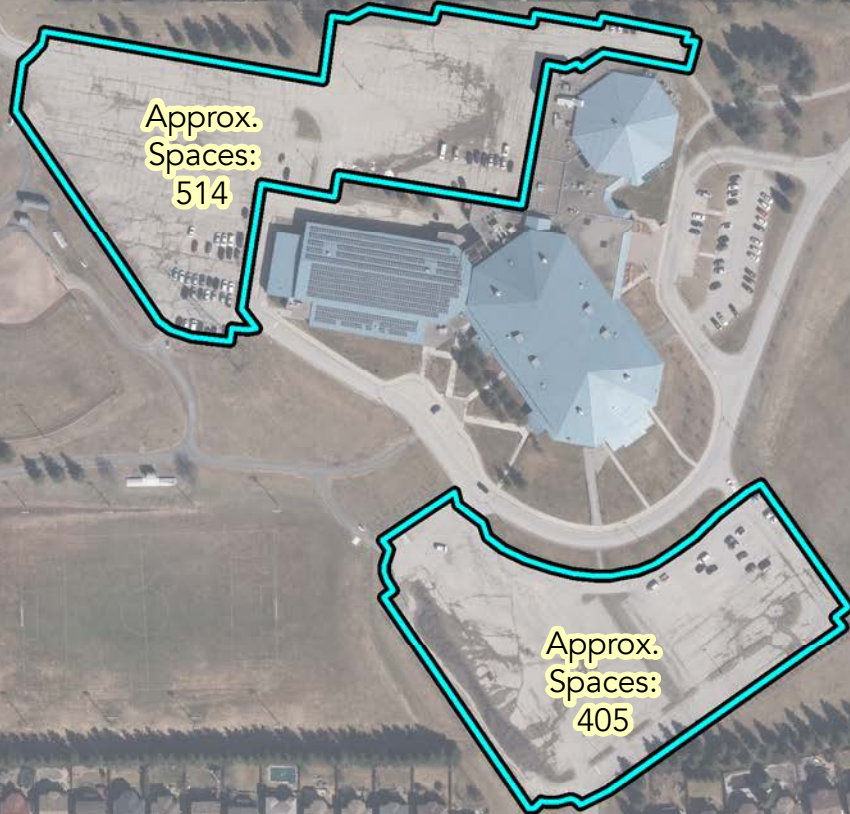
\*Map not to scale. Printed: August, 2016.





CROSSLAND GATE

EAGLE ST W



MCCAFFREY RD

RANNIE RD

RITA'S AVE

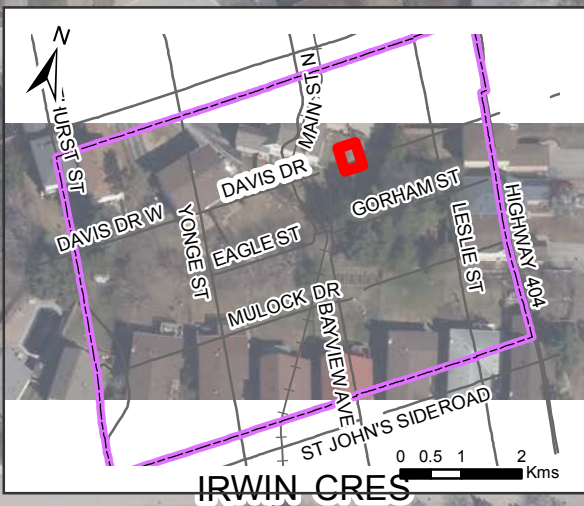
Town of Newmarket  
 Ray Twinney  
 Community Centre  
 100 Eagle Street W

 Municipal Parking Lots  
 Available for Reservation  
 (Approx. total spaces: 920)

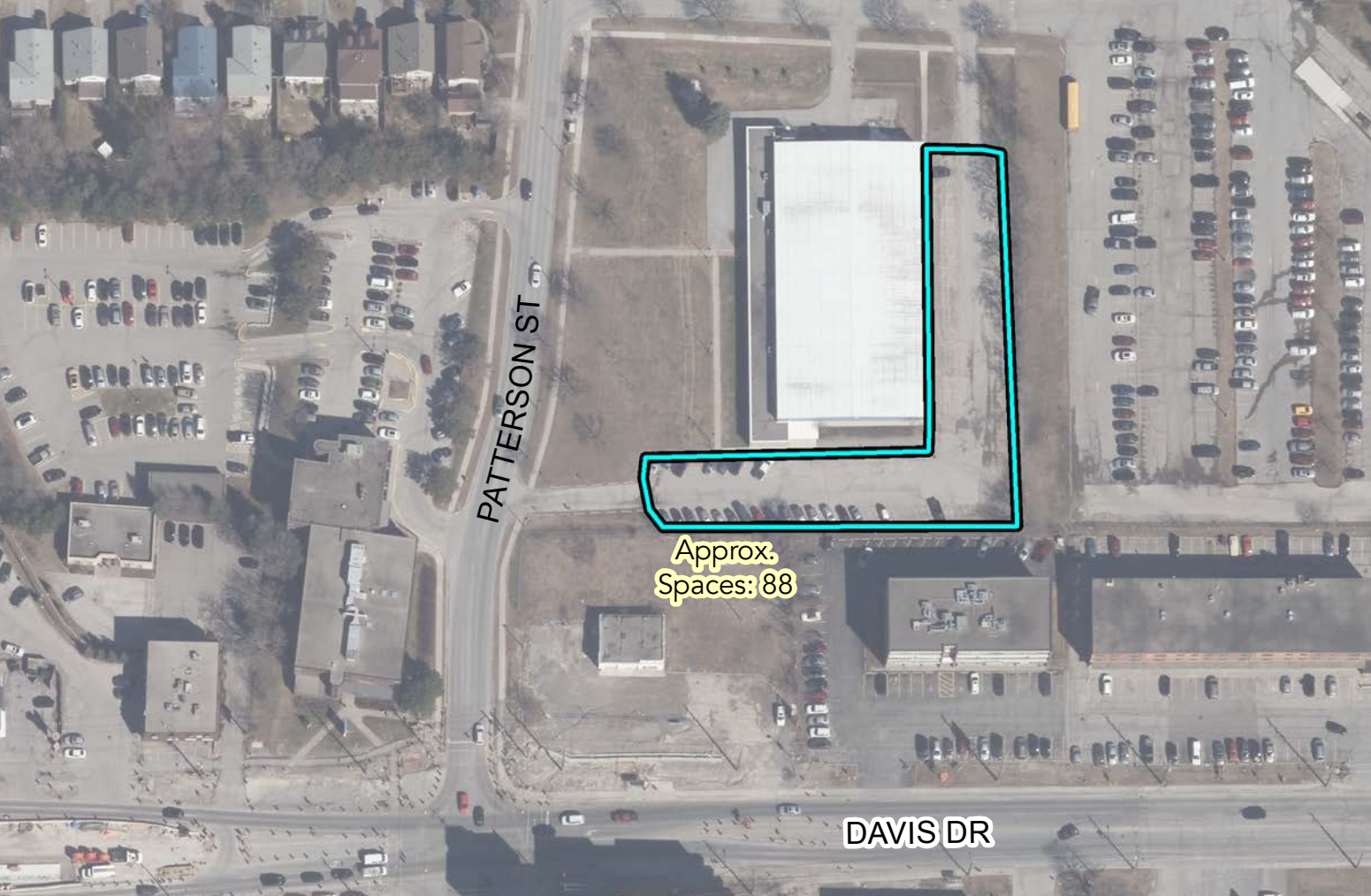
\*Map not to scale. Printed: August, 2016.



Designed & Produced by Information Technology - GIS. Sources: Roads, Railway - Geomatics Division ©2016 The Regional Municipality of York. All other data - © Town of Newmarket, 2016. **DISCLAIMER:** This document is provided by the Town of Newmarket for your personal, non-commercial use. The information depicted on this map has been compiled from various sources. While every effort has been made to accurately depict the information, data and/or mapping errors may exist. This map has been produced for illustrative purposes only. It is not a substitute for a legal survey.



LEEDER CRT



Approx.  
Spaces: 88

PATTERSON ST

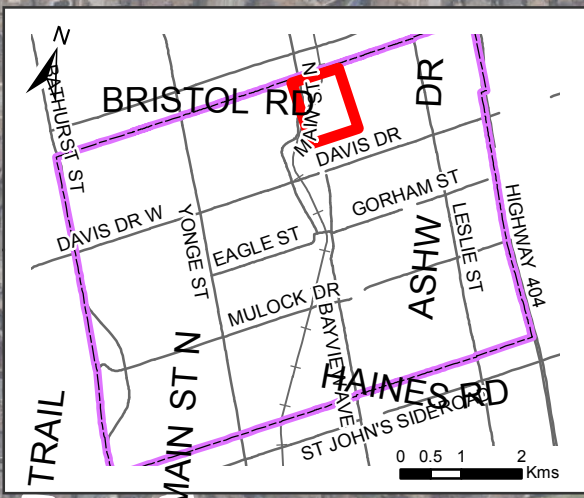
DAVIS DR

Town of Newmarket  
Hollingsworth  
Civic Arena  
35 Patterson Street

 Municipal Parking Lots  
Available for Reservation

\*Map not to scale. Printed: August, 2016.





GRP LOT 4  
Approx.  
Spaces: 95

500

GRP LOT 3  
Approx.  
Spaces: 55

225

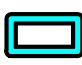

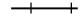
GRP LOT 2  
Approx.  
Spaces: 35

215

GRP LOT 1  
Approx.  
Spaces: 82

195

### Town of Newmarket George Richardson Park Municipal Parking Lots

-  Municipal Parking Lots Available for Reservation
-  Park Area
-  Railway

\*Map by InfoWave

Printed: August, 2016.

