

# Rate of Stormwater Runoff

(Based on Landuse\*)  
Town of Newmarket

## Legend

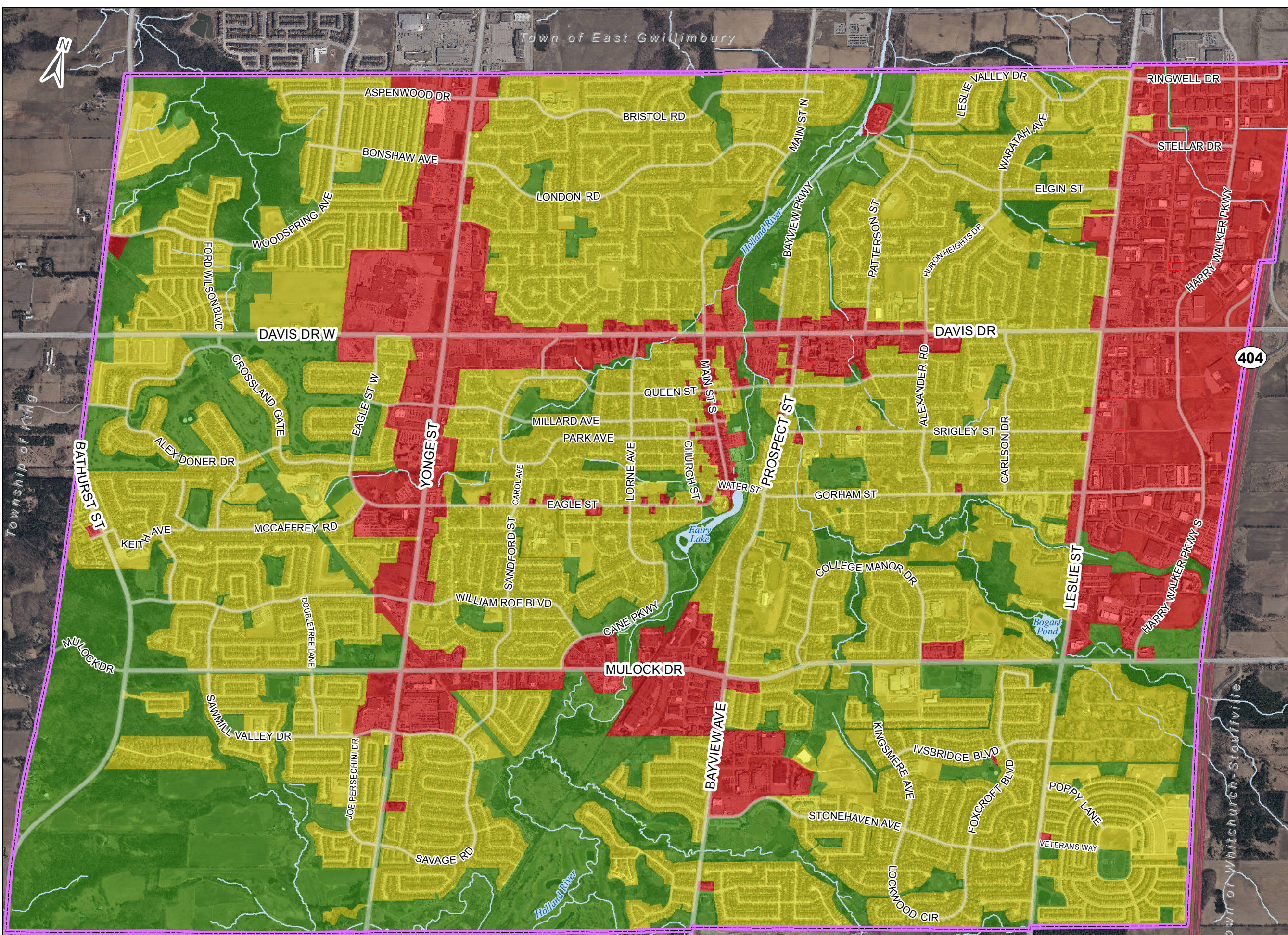
### Rate of Stormwater Runoff

- Low
  - Open Space
  - Estate Residential
- Medium
  - Single Residential
  - Multi-Residential
  - Highrise
  - Institutional
- High
  - Commercial
  - Industrial
  - Urban Centre

- Municipal Boundary
- Highway
- Road
- Water Feature



\* Landuse based on the Town's Comprehensive Zoning Bylaw 2010-40 and Restricted Zoning Bylaw 2003-121. Rate of stormwater runoff based on the Town's Engineering Design Standards and Criteria, Sec. C4.02 Runoff Coefficients, Sept. 2015.



Please visit [newmarket.ca](http://newmarket.ca) for current information about Newmarket's Zoning By-law and Engineering Standards.